

Test Patient

Bounce Optimum Health and Wellbeing

5 Goroke Street

Hallett Cove

S.A. 5158

Phone (04)1020-0244

Fax () ____ - ____

Phone:

Website www.bounceoptimumhealthandwellbeing.com

Mobile:

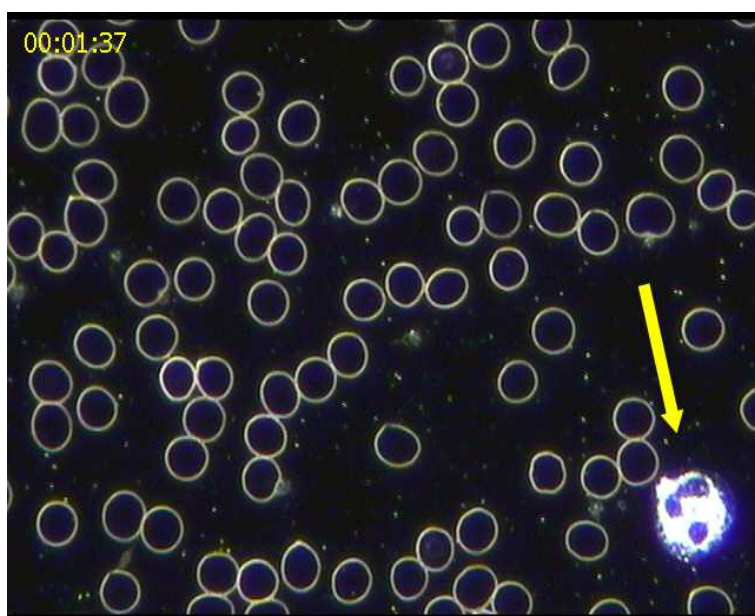
Email Address info@bounceoptimumhealthandwellbeing.com

Test Date: 06/03/2008 16:54

Practitioner: Test Practitioner

ND, BHSc (Comp Med)

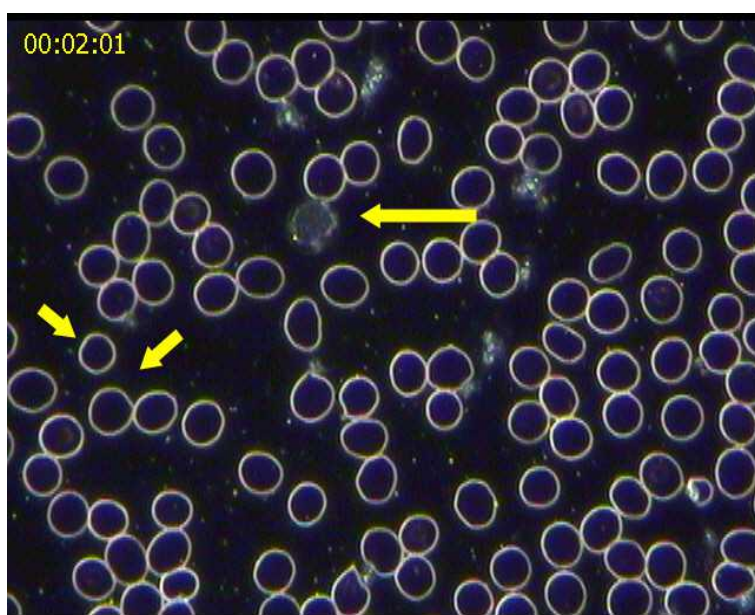
Hrs since last meal: 2 fish and salad, 5 mL fish oil



Parameter: Neutrophils

Grade: healthy

Neutrophils are medium sized, silvery white blood cells. They are the 'garbage collectors' of the immune system, patrolling your body, cleaning up debris and removing toxic or infective material.



Parameter: Lymphocytes

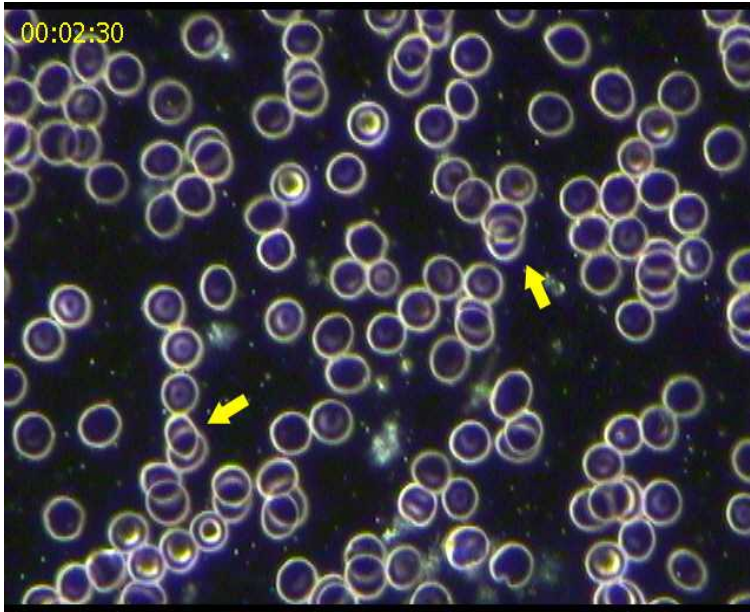
Grade: healthy

Lymphocytes are small to medium sized dull white blood cells and are part of your immune defence system. They are particularly involved in fighting viral infections, and also certain bacterial infections.

Parameter: Anisocytosis

Grade: 2-3

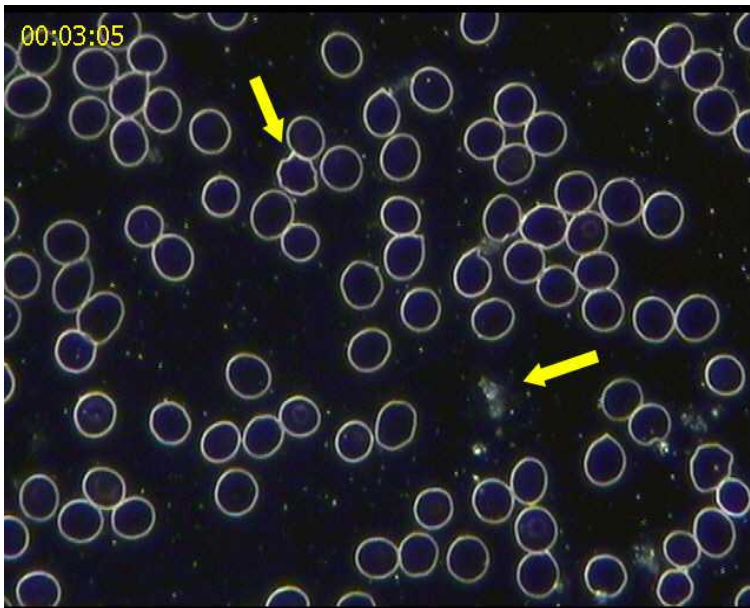
There is significant variation in the size of your red blood cells. This is common, but not ideal and may lead to fatigue. Anisocytosis is commonly associated with an insufficiency of B12, folate or iron. Less commonly it may be caused by toxicity or infection.



Parameter: Erythrocyte Aggregation

Grade: mild

Your red blood cells are sticking to one another and forming clumps, due to being coated in sticky proteins. This is a sign that there may be inflammation happening in your body. This inflammation can be associated with infection, allergy, toxicity, poor digestion or unhealthy dietary choices.



Parameter: Poikilocytes

Grade: non-significant

Some of your red blood cells are irregularly shaped (not round). This loss of structural form may result from oxidative damage due to toxicity, inflammation, infection or nutrient insufficiency.

Parameter: Platelet Aggregation

Grade: normal

Platelets are responsible for blood clotting. Various lifestyle choices (such as smoking or eating fatty foods) and disease states may make platelets stickier, resulting in platelet aggregations. Large aggregations can be a sign of an increased tendency to blood clotting.



Hemaview Screening Report



White Blood Cell Differential Count

Cell type	Counted %	Low	High
Neutrophils	56	< 55	> 65
Band Cells	0		
Lymphocytes	26	< 20	> 30
Atypical Lymphocytes	0		
Monocytes	13	< 4	> 8
Eosinophils	2	0	> 4
Basophils	0	0	> 1

White Blood Cell Count Parameters

Monocytes - elevated (>8%)

Monocytes are the 'detectives' of the immune system, investigating any new intruders in the body. They engulf and process the foreign material, alerting neutrophils and lymphocytes to the presence of infective agents and allergens. Their numbers may be increased during infection, especially at the very early stage before symptoms occur.

Interpretation

Inflammation

Your blood shows one or more parameters that indicate your body may be experiencing inflammation. Inflammation is produced under a wide range of circumstances including exposure to physical injury, infection, allergy, auto-immunity, toxicity and stress. Ongoing and untreated inflammation can be damaging to the body and should be addressed.

Inflammation Management - Inflammation Intensive Care

Inflammation Intensive Care contains a combination of herbs, including ginger, turmeric and quercetin, which have a broad and rapid anti-inflammatory effect. Inflammation Intensive Care may assist in reducing the symptoms of inflammation in your body while the underlying cause is being addressed.

Iron, B12 and Folate support

There are signs in your blood that may indicate you have an increased need for iron, vitamin B12 and / or folic acid. These nutrients are essential for healthy and uniform blood cell production and a lack of these results in symptoms that include fatigue or poor immune function.

Iron, B12 and Folate Management - Hemagenics Intensive Care

Hemagenics Intensive Care contains specific nutrients including iron, vitamin B12 and folic acid to promote the production of healthy red blood cells by the bone marrow. Hemagenics Intensive Care is of great benefit where there is an increased demand for these nutrients as occurs in pregnancy, lactation, growth, the elderly, athletes and vegetarians.

Allergy

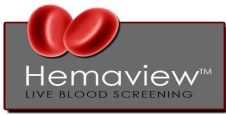
There are signs in your blood that may indicate the presence of an allergy. An allergy occurs when your body has an immune response to something that is not normally considered harmful. You may be exposed to allergens in the air, through your skin or in the food you eat.

Allergy Management - Luteol Plus

Luteol Plus is a potent herbal formula that may assist in the management and relief of symptoms of allergy. The herbs in Luteol Plus may help to rebalance the immune system and so reduce the risk of allergies and inflammation.

Practitioner's Comments

Priorities are implementing dietary and nutritional strategies to reduce inflammation, allergy and improve iron, B12 and folate status



Hemaview Screening Report



Disclaimer

Hemaview Live Blood Screening is for educational purposes only and should not be used to diagnose any medical condition. Any imbalances should be confirmed by additional pathology testing.